

**REGIONAL DISTRICT OF NANAIMO  
BYLAW NO. 1620.04**

**A BYLAW TO AMEND REGIONAL DISTRICT OF NANAIMO ELECTORAL AREA 'A'  
OFFICIAL COMMUNITY PLAN BYLAW NO. 1620, 2011**

The Board of the Regional District of Nanaimo, in open meeting assembled, enacts as follows:

- A. This Bylaw may be cited as “Regional District of Nanaimo Electoral Area ‘A’ Official Community Plan Amendment Bylaw No. 1620.04, 2018”.
- B. The “Regional District of Nanaimo Electoral Area ‘A’ Official Community Plan Bylaw No. 1620, 2011” is hereby amended as set out in Schedule ‘A’ of this Bylaw.

Introduced and read two times this \_\_\_ day of \_\_\_\_\_ 20XX.

Considered in conjunction with the Regional District of Nanaimo Financial Plan and any applicable Waste Management Plans this \_\_\_ day of \_\_\_\_\_ 20XX.

Public Hearing held pursuant to Section 464 of the *Local Government Act* this \_\_\_ day of \_\_\_\_\_ 20 XX.

Read a third time this \_\_\_ day of \_\_\_\_\_ 20 XX.

Adopted this \_\_\_ day of \_\_\_\_\_ 20 XX.

---

CHAIR

---

CORPORATE OFFICER

**REGIONAL DISTRICT OF NANAIMO**  
**Bylaw No. 1620.04**

**Schedule 'A'**

1. Schedule B – Cedar Main Street Village Plan of “Regional District of Nanaimo Electoral Area ‘A’ Official Community Plan Bylaw No. 1620, 2011” is hereby amended as follows:

**a) Section 4.1 - General Land Use Policies**

By adding Section 4.1.6 – Community Services after Section 4.1.5 - Recreation as provided in Attachment 1.

**b) Section 6.5 – Cedar Main Street Development Permit Area (DPA) Exemptions**

By adding the following after exemption 7.

8. Construction of unattended public utilities.
9. Construction of an attended public utility and related accessory buildings and structures (excluding government office) such as a water treatment facility, shall be exempt from DPA guidelines in categories 6.8.1, 6.8.2, 6.8.3, 6.8.6, and 6.8.7 as defined in Section 6.8 below.

**c) Maps**

The following Maps which form part of Bylaw 1620, 2011 are hereby amended as follows:

- i. Map No. 2 – Cedar Main Street Land Use Designations is deleted and replaced with Attachment 2.
- ii. Map No. 3 – Parks, Trails, and Transportation is deleted and replaced with Attachment 3.

**Attachment 1  
Bylaw 1620.04  
Community Services Land Use Designation**

**4.1.6 Community Services**

Community water and fire protection services in the CMS Plan Area are provided by the NCID. Community sewer services are provided by the RDN to a select number of properties based on the availability of sewer service connections allocated to the CMS Plan Area.

The provision of community water, sewer, and other related government-provided services are critical to achieving the goals and objectives of the CMS Plan. These services also help protect the environment and the health of CMS Plan Area residents by protecting groundwater resources and providing the community with a secure and sustainable source of drinking water.

**Objectives and Policies**

**Objective 4.1.6.1 To support the provisions of community services within the Plan Area**

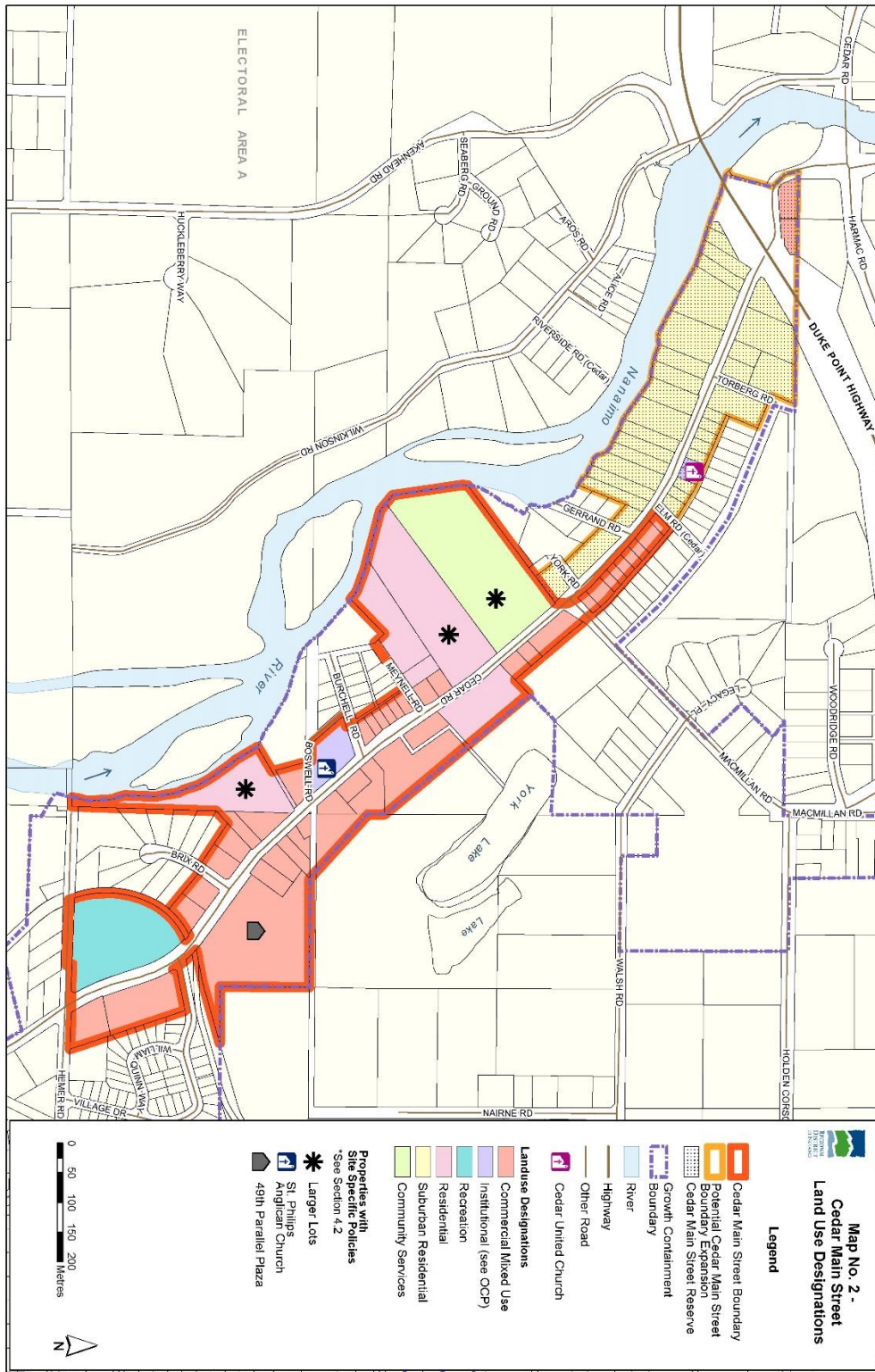
<b>Section 4.1.6</b>	<b>Policies</b>	<b>Related Actions</b>	<b>Who</b>	<b>When</b>
<b>Policy 1</b>	Lands within the Community Services Land Use Designation are shown on Map No. 2.	n/a	n/a	n/a
<b>Policy 2</b>	Permitted uses supported within this designation shall generally include community water or sewer service facilities, government offices, community information and drop-in medical centres, emergency or social services, religious, cultural, or service organizations, educational facilities, recreational facilities, public assembly uses, and community health care facilities.	n/a	n/a	n/a
<b>Policy 3</b>	Expansions to the designation may be supported within the CMS Plan area to accommodate uses which are consistent with Policy 2 above.	n/a	n/a	n/a

**Objective 4.1.6.2 To preserve the Rural Character of Larger Lots**

<b>Section 4.1.6</b>	<b>Policies</b>	<b>Related Actions</b>	<b>Who</b>	<b>When</b>
<b>Policy 1</b>	Rezoning proposals should retain and/or enhance mature trees and vegetation along Cedar Road.	At the time of rezoning or DP, require the retention and/or enhancement of vegetation along Cedar Road through the use of a Section	RDN	n/a

<b>Section 4.1.6</b>	<b>Policies</b>	<b>Related Actions</b>	<b>Who</b>	<b>When</b>
		219 covenant or other appropriate mechanisms.		
<b>Policy 2</b>	Access points to Cedar Road should be minimized.	At the time of rezoning or DP, work with the applicant and MOTI to minimize access points on to Cedar Road.	RDN MOTI	n/a

**Attachment 2  
Bylaw 1620.04  
Map No. 2 – Cedar Main Street Land Use Designations**



### Attachment 3 Bylaw 1620.04 Map No. 3 – Parks, Trails, and Transportation

