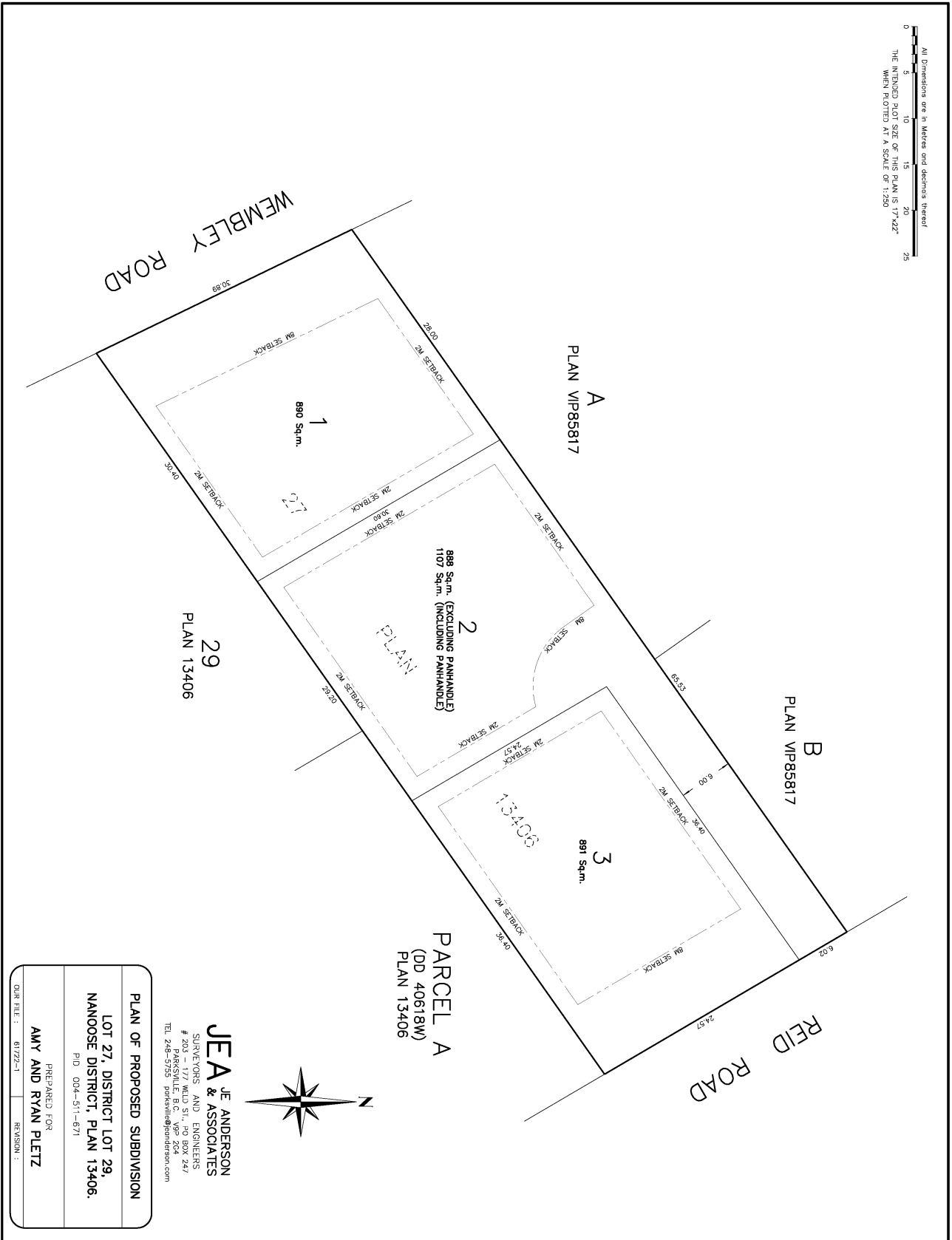


Attachment 2

Proposed Plan of Subdivision

All Dimensions are in Metres and decimals thereof
 THE INTENDED PLOT SIZE OF THIS PLAN IS 17'x22'
 WHEN PLOTTED AT A SCALE OF 1:250



JEA & ASSOCIATES
 J.E. ANDERSON
 SURVEYORS AND ENGINEERS
 # 203 - 177 WILD ST., PO BOX 247
 NANOOSE DISTRICT, BC V8L 2A7
 TEL 246-5755 | portville@jeaderson.com

PLAN OF PROPOSED SUBDIVISION	
LOT 27, DISTRICT LOT 29, NANOOSE DISTRICT, PLAN 13406.	
PREPARED FOR	AMY AND RYAN PLETZ
OUR FILE :	61722-1
REVISION :	