

RDN ZONING BYLAW 500 REVIEW
ELECTORAL AREA A

BYLAW 500

RS1 Q

Subdivision District

Zone Classification Short Title

Bylaw 500 Boundary (no change)

RU1D to RR2D

Proposed Bylaw 500 Zoning Revision

Proposed Bylaw 500 Subzone

BYLAW 1285

A-1

Zone Classification Short Title

Bylaw 1285 Boundary

A-1.3

Site Specific Zoning

Land Use Contracts

Electorat Area Boundary

Municipality

Proposed Zoning Consolidation Summary

New Zone	New Zone Name	Existing Zones
LI	Light Industrial	IN1
MI	Medium Industrial	IN2, IN3
HI	Heavy Industrial	IN5
CRS	Commercial Retail & Service	CM1, CM2, CM2.1, CM3
CRR	Commercial Resort & Recreation	CM4, CM5, CM6
CDx	tdtd	CM8
CDy	tdtd	RCM
RR1	Rural Residential - One Dwelling	RU6
RR2	Rural Residential - Two Dwellings	RU1, RU1.1, RU2, RU3, RU4, RU5, RU7, RU8, RU9
CDz	tdtd	RU10

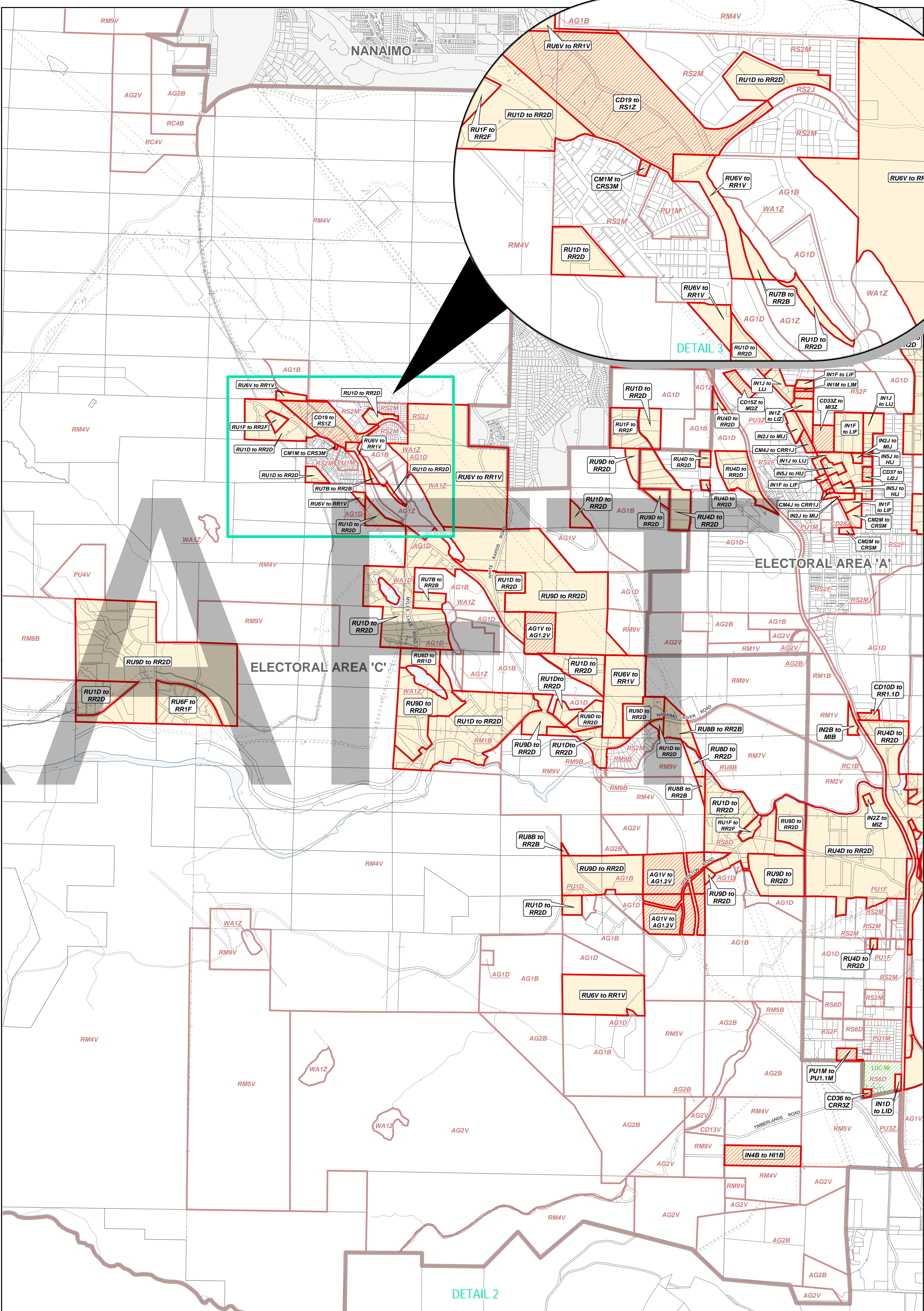
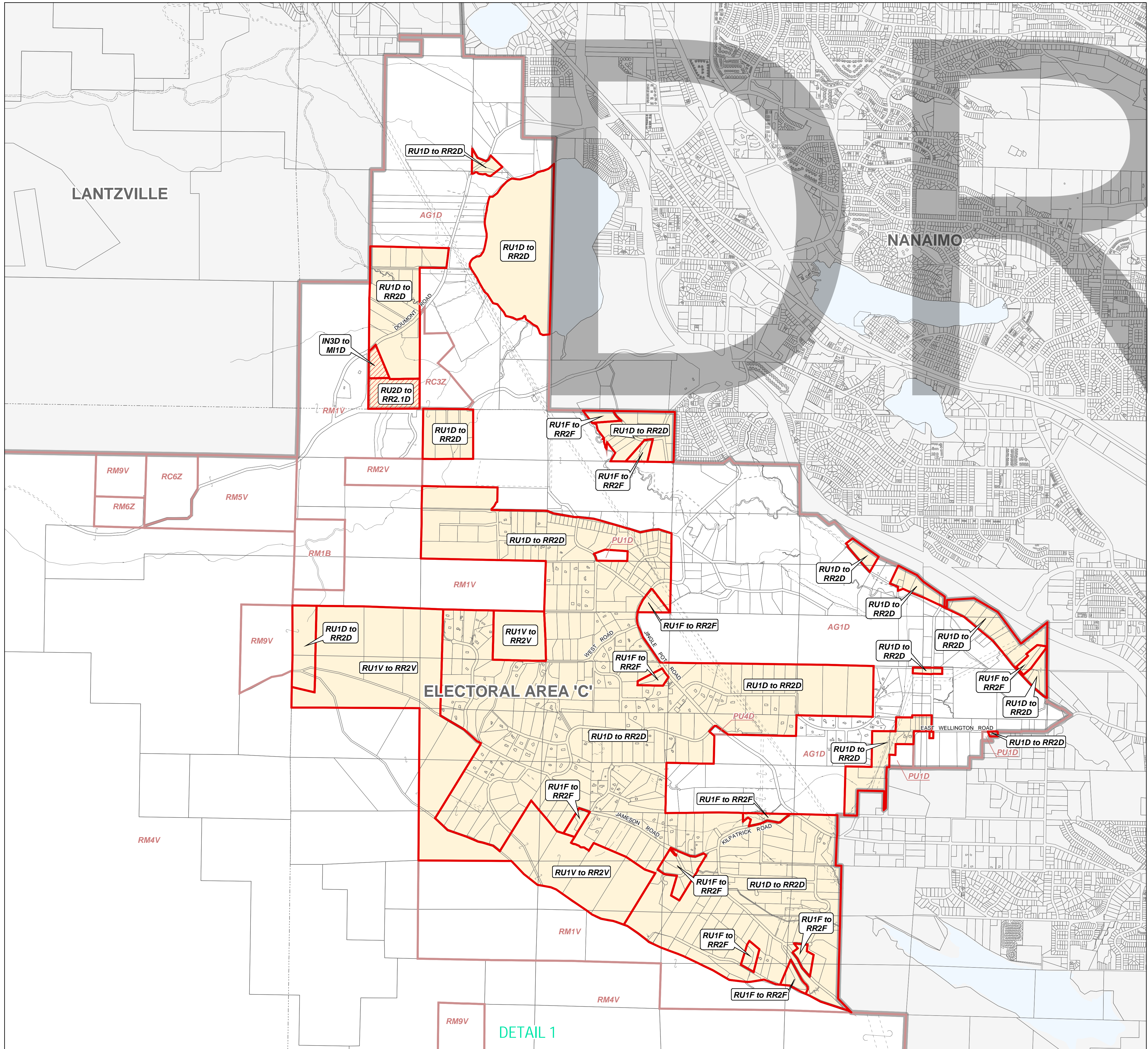
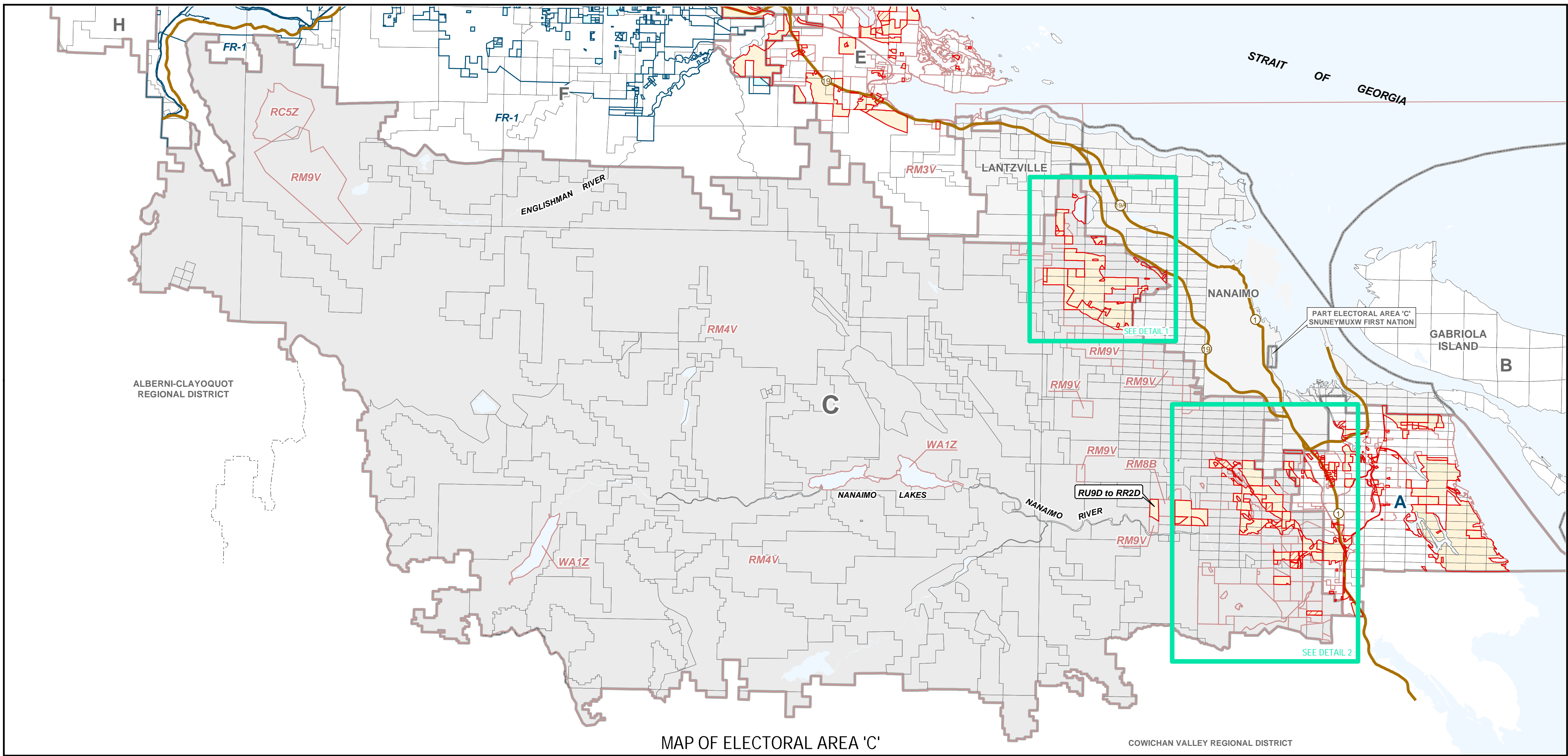
REGIONAL DISTRICT OF NANAIMO

BYLAW NO. 500

SCHEDULE 'B' SUBDIVISION DISTRICTS - MINIMUM PARCEL SIZES

The minimum size of any lot created by subdivision shall be determined by the standard of services provided and shall meet the applicable minimal parcel size set out below.¹

Subdivision District	Minimum Parcel Sizes			
	Community Water & Sewer System	Community Water System - No Community Sewer	Community Sewer System - No Community Water	All Other Subdivisions
A	20.0 ha	20.0 ha	20.0 ha	20.0 ha
B	8.0 ha	8.0 ha	8.0 ha	8.0 ha
C	5.0 ha	5.0 ha	5.0 ha	5.0 ha
CC	4.0 ha	4.0 ha	4.0 ha	4.0 ha
D	2.0 ha	2.0 ha	2.0 ha	2.0 ha
E	1.0 ha	1.0 ha	1.0 ha	1.0 ha
F	1.0 ha	1.0 ha	1.0 ha	1.0 ha
G	8000 m ²	1.0 ha	1.0 ha	1.0 ha
H	5000 m ²	1.0 ha	1.0 ha	1.0 ha
J	4000 m ²	1.0 ha	1.0 ha	1.0 ha
K	4000 m ²	4000 m ²	4000 m ²	4000 m ²
L	2000 m ²	2000 m ²	4000 m ²	4000 m ²
M	2000 m ²	2000 m ²	1.0 ha	1.0 ha
N	1600 m ²	1600 m ²	1.0 ha	1.0 ha
P	1600 m ²	1600 m ²	1.0 ha	1.0 ha
Q (A-1.3.1)	700 m ²	700 m ²	1.0 ha	1.0 ha
Q (A-1.3.2)	700 m ²	700 m ²	1.0 ha	1.0 ha
R	500 m ²	1.0 ha	1.0 ha	1.0 ha
S	400 m ²	1.0 ha	1.0 ha	1.0 ha
T	600 m ²	No further subdivision	No further subdivision	No further subdivision
V	50.0 ha	No further subdivision	No further subdivision	No further subdivision
Z	50.0 ha	No further subdivision	No further subdivision	No further subdivision
CDZ (1)	400 lots with approved pump and haul service connection			



RDN ZONING BYLAW 500 REVIEW

ELECTORAL AREA C

BYLAW 500

[RS1] [Q]

Subdivision District

Zone Classification Short Title

Bylaw 500 Boundary (no change)

[RU1D to RR2D] [Proposed Bylaw 500 Zoning Revision] [Proposed Bylaw 500 Subzone]

BYLAW 1285

[A-1]

Zone Classification Short Title

Bylaw 1285 Boundary

[A-1.3] Site Specific Zoning

[Land Use Contracts] [Electoral Area Boundary] [Municipality]

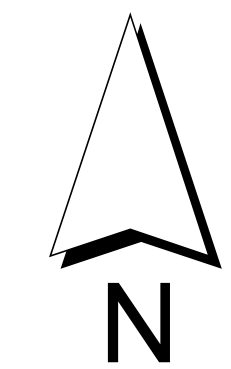
Proposed Zoning Consolidation Summary

New Zone	New Zone Name	Existing Zones
LI	Light Industrial	IN1
MI	Medium Industrial	IN2, IN3
HI	Heavy Industrial	IN5
CRS	Commercial Retail & Service	CM1, CM2, CM2.1, CM3
CRN	Commercial Resort & Recreation	CM4, CM5, CM6
CDN	td	CM8
CDY	td	RCM
RR1	Rural Residential - One Dwelling	RUS
RR2	Rural Residential - Two Dwellings	RU1, RU2.1, RU2, RU3, RU4, RU5, RU7, RU8, RU9
CDU	td	RU10

REGIONAL DISTRICT OF NANAIMO
BYLAW NO. 500
SCHEDULE "B" SUBDIVISION DISTRICTS - MINIMUM PARCEL SIZES

The minimum size of lots created by subdivisions shall be determined by the standard of services provided and shall meet the applicable minimum parcel size set out below:

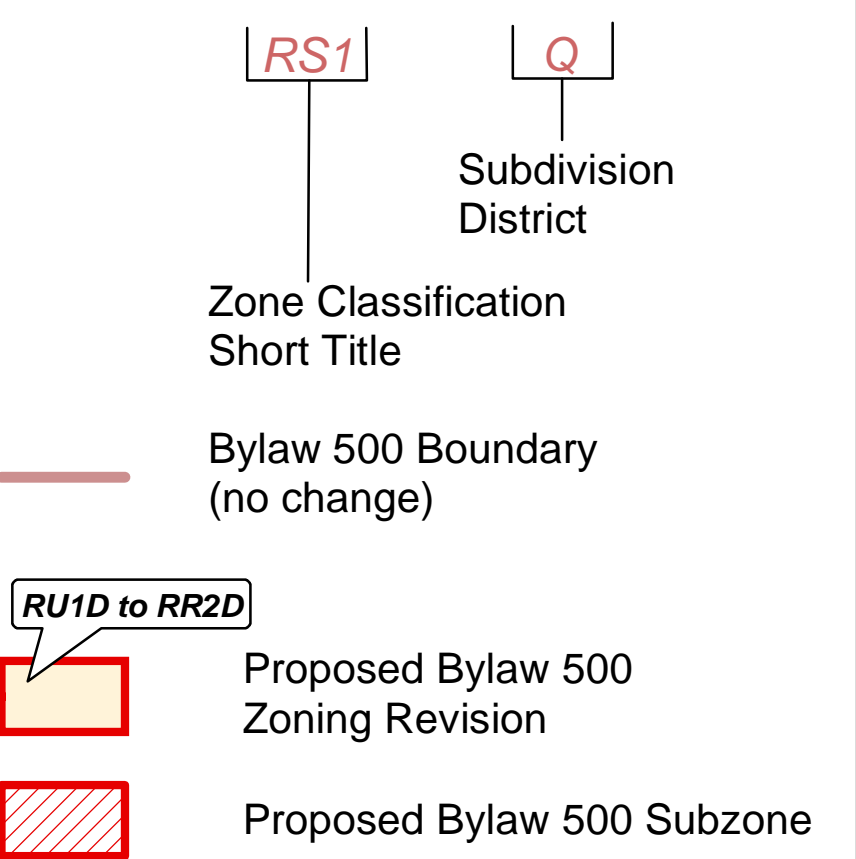
Subdivision District	Community Water & Sewer System	Community Water System - No Community Sewer	Community Water System - No Community Sewer	All Other Subdivisions
A	20.0 ha	20.0 ha	20.0 ha	20.0 ha
B	5.0 ha	5.0 ha	5.0 ha	5.0 ha
C	5.0 ha	5.0 ha	5.0 ha	5.0 ha
CC	5.0 ha	5.0 ha	5.0 ha	5.0 ha
D	2.0 ha	2.0 ha	2.0 ha	2.0 ha
E	1.0 ha	1.0 ha	1.0 ha	1.0 ha
F	1.0 ha	1.0 ha	1.0 ha	1.0 ha
G	2000 m ²	1.0 ha	1.0 ha	1.0 ha
H	2000 m ²	1.0 ha	1.0 ha	1.0 ha
I	2000 m ²	1.0 ha	1.0 ha	1.0 ha
J	2000 m ²	1.0 ha	1.0 ha	1.0 ha
K	2000 m ²	1.0 ha	1.0 ha	1.0 ha
L	2000 m ²	1.0 ha	1.0 ha	1.0 ha
M	2000 m ²	1.0 ha	1.0 ha	1.0 ha
N	2000 m ²	1.0 ha	1.0 ha	1.0 ha
O	2000 m ²	1.0 ha	1.0 ha	1.0 ha
P	2000 m ²	1.0 ha	1.0 ha	1.0 ha
Q	2000 m ²	1.0 ha	1.0 ha	1.0 ha
R	2000 m ²	1.0 ha	1.0 ha	1.0 ha
S	2000 m ²	1.0 ha	1.0 ha	1.0 ha
T	2000 m ²	1.0 ha	1.0 ha	1.0 ha
U	2000 m ²	1.0 ha	1.0 ha	1.0 ha
V	2000 m ²	1.0 ha	1.0 ha	1.0 ha
W	2000 m ²	1.0 ha	1.0 ha	1.0 ha
X	2000 m ²	1.0 ha	1.0 ha	1.0 ha
Y	2000 m ²	1.0 ha	1.0 ha	1.0 ha
Z	2000 m ²	1.0 ha	1.0 ha	1.0 ha



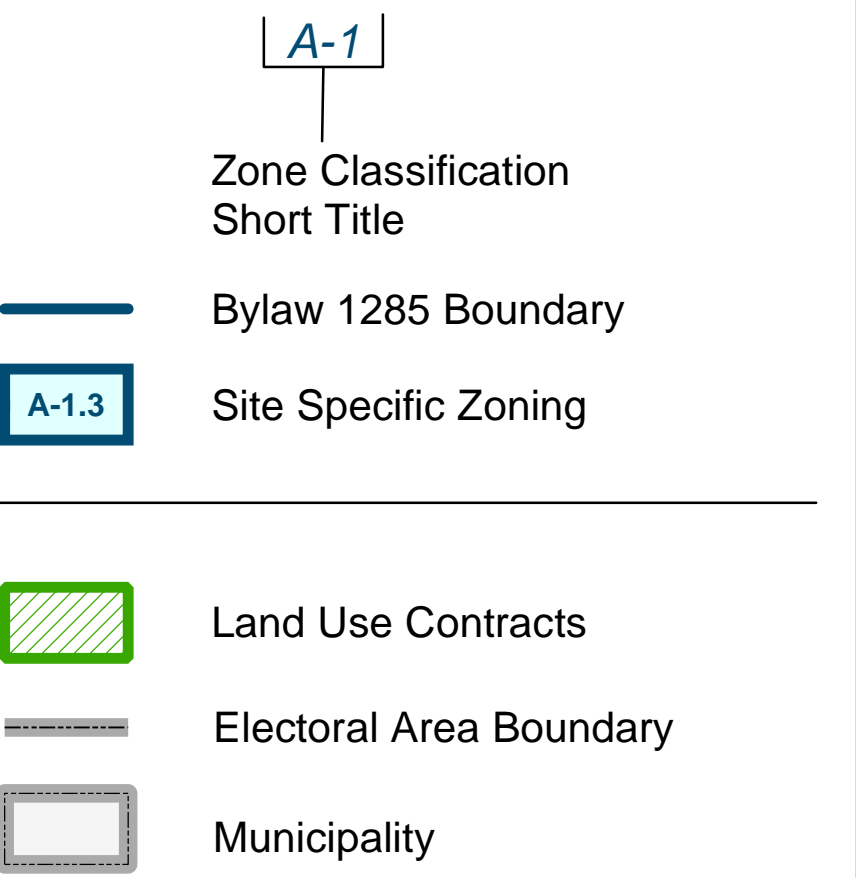
RDN ZONING BYLAW 500 REVIEW

ELECTORAL AREA E

BYLAW 500



BYLAW 1285



Proposed Zoning Consolidation Summary

New Zone	New Zone Name	Existing Zones
LI	Light Industrial	IN1
MI	Medium Industrial	IN2, IN3
HI	Heavy Industrial	IN5
CRS	Commercial Retail & Service	CM1, CM2, CM2.1, CM3
CRB	Commercial Resort & Recreation	CM4, CM5, CM6
CDx	td	CM8
CDy	td	RCM
RR1	Rural Residential - One Dwelling	RUG
RR2	Rural Residential - Two Dwelling	RU1, RU1.1, RU2, RU3, RU4, RU5, RU7, RU8, RU9
CDz	td	RU10

REGIONAL DISTRICT OF NANAIMO BYLAW NO. 500 SCHEDULE "M" SUBDIVISION DISTRICTS - MINIMUM PARCEL SIZES

The minimum size of any lot created by subdivision shall be determined by the standard of services provided and shall meet the applicable minimal parcel size set out below:

Subdivision District	Minimum Parcel Sizes			
	Community Water & Sewer System	Community Water System - No Community Sewer	Community Sewer System - No Community Water	All Other Subdivisions
A	20.0 ha	20.0 ha	20.0 ha	20.0 ha
B	8.0 ha	8.0 ha	8.0 ha	8.0 ha
C	5.0 ha	5.0 ha	5.0 ha	5.0 ha
CD	4.0 ha	4.0 ha	4.0 ha	4.0 ha
D	2.0 ha	2.0 ha	2.0 ha	2.0 ha
E	1.5 ha	1.5 ha	1.5 ha	1.5 ha
F	1.0 ha	1.0 ha	1.0 ha	1.0 ha
G	1.0 ha	1.0 ha	1.0 ha	1.0 ha
H	1.0 ha	1.0 ha	1.0 ha	1.0 ha
I	1.0 ha	1.0 ha	1.0 ha	1.0 ha
J	1.0 ha	1.0 ha	1.0 ha	1.0 ha
K	4000 m ²	4000 m ²	4000 m ²	4000 m ²
L	2000 m ²	2000 m ²	4000 m ²	4000 m ²
M	2000 m ²	2000 m ²	1.0 ha	1.0 ha
N	1600 m ²	1600 m ²	1.0 ha	1.0 ha
O	1600 m ²	1600 m ²	1.0 ha	1.0 ha
P	700 m ²	7.0 ha	1.0 ha	1.0 ha
Q	700 m ²	2000 m ²	1.0 ha	1.0 ha
R	500 m ²	7.0 ha	1.0 ha	1.0 ha
S	400 m ²	2000 m ²	1.0 ha	1.0 ha
T	300 m ²	No further subdivision	No further subdivision	No further subdivision
U	30.0 ha	No further subdivision	No further subdivision	No further subdivision
V	400 lots with approved pump and haul service connection			



0 100 200 400 600 800 1,000 1,200 1,400 Meters

Revision Date: June 2022

RDN ZONING BYLAW 500 REVIEW

ELECTORAL AREA G

BYLAW 500

[RS1] [Q]

Subdivision District

Zone Classification Short Title

Bylaw 500 Boundary (no change)

[RU1D to RR2D]

Proposed Bylaw 500 Zoning Revision

[Red hatched box]

Proposed Bylaw 500 Subzone

BYLAW 1285

[A-1]

Zone Classification Short Title

Bylaw 1285 Boundary

[A-1.3]

Site Specific Zoning

[Green hatched box]

Land Use Contracts

[Grey line]

Electorate Area Boundary

[Grey box]

Municipality

Proposed Zoning Consolidation Summary

New Zone	New Zone Name	Existing Zones
LI	Light Industrial	IK1
MI	Medium Industrial	IK1, IK3
HI	Heavy Industrial	IK3
CRS	Commercial Retail & Service	CM1, CM2, CM2.1, CM3
CRF	Commercial Resort & Recreation	CM4, CM5, CM6
CDx	City	CD4B
CDy	City	CD4B
CDz	City	CD4B
R1	Rural Residential - One Dwelling	RUE
R2	Rural Residential - Two Dwellings	RUE, RUS, RUT, RUS, RUT, RUS, RUT
CDx	City	CD4B

REGIONAL DISTRICT OF NANAIMO

SCHEDULE OF SUBDIVISION DISTRICTS - MINIMUM PARCEL SIZES

The minimum size of any lot created by subdivision shall be determined by the standard of service provided and shall meet the applicable minimum parcel size set out below.

Subdivision District	Commonly Used Parcel Size	Commonly Used Parcel Size	Commonly Used Parcel Size	All Other Subdivisions
A	20,000 m ²	20,000 m ²	20,000 m ²	20,000 m ²
B	5,000 m ²	5,000 m ²	5,000 m ²	5,000 m ²
C	10,000 m ²	10,000 m ²	10,000 m ²	10,000 m ²
D	2,000 m ²	2,000 m ²	2,000 m ²	2,000 m ²
E	1,000 m ²	1,000 m ²	1,000 m ²	1,000 m ²
F	500 m ²	500 m ²	500 m ²	500 m ²
G	200 m ²	200 m ²	200 m ²	200 m ²
H	100 m ²	100 m ²	100 m ²	100 m ²
I	50 m ²	50 m ²	50 m ²	50 m ²
J	25 m ²	25 m ²	25 m ²	25 m ²
K	10 m ²	10 m ²	10 m ²	10 m ²
L	5 m ²	5 m ²	5 m ²	5 m ²
M	2 m ²	2 m ²	2 m ²	2 m ²
N	1 m ²	1 m ²	1 m ²	1 m ²
O	0.5 m ²	0.5 m ²	0.5 m ²	0.5 m ²
P	0.2 m ²	0.2 m ²	0.2 m ²	0.2 m ²
Q	0.1 m ²	0.1 m ²	0.1 m ²	0.1 m ²
R	0.05 m ²	0.05 m ²	0.05 m ²	0.05 m ²
S	0.02 m ²	0.02 m ²	0.02 m ²	0.02 m ²
T	0.01 m ²	0.01 m ²	0.01 m ²	0.01 m ²
U	0.005 m ²	0.005 m ²	0.005 m ²	0.005 m ²
V	0.002 m ²	0.002 m ²	0.002 m ²	0.002 m ²
W	0.001 m ²	0.001 m ²	0.001 m ²	0.001 m ²
X	0.0005 m ²	0.0005 m ²	0.0005 m ²	0.0005 m ²
Y	0.0002 m ²	0.0002 m ²	0.0002 m ²	0.0002 m ²
Z	0.0001 m ²	0.0001 m ²	0.0001 m ²	0.0001 m ²

RDN ZONING BYLAW 500 REVIEW

ELECTORAL AREA H

Sheet 1 of 2 Sheets

BYLAW 500

- [RS1] Subdivision District
- [Q] Zone Classification Short Title
- Bylaw 500 Boundary (no change)
- [RU1D to RR2D] Proposed Bylaw 500 Zoning Revision
- [RS1] Proposed Bylaw 500 Subzone

BYLAW 1285

- [A-1] Zone Classification Short Title
- Bylaw 1285 Boundary
- [A-1.3] Site Specific Zoning
- Land Use Contracts
- Electorat Area Boundary
- Municipality

Proposed Zoning Consolidation Summary

New Zone	New Zone Name	Existing Zones
LI	Light Industrial	IN1
MI	Medium Industrial	IN2, IN3
HI	Heavy Industrial	IN5
CRS	Commercial Retail & Service	CM1, CM2, CM2.1, CM3
CRR	Commercial Resort & Recreation	CM4, CM5, CM6
CD	Community Development	CM8
CDV	Community Development - Village	RCM
RR1	Rural Residential - One Dwelling	RUS, RU1, RU1.1, RU2, RU3, RU4, RU5, RU7, RU8, RU9
RR2	Rural Residential - Two Dwellings	RU10
CDZ	Community Development - Zone	

REGIONAL DISTRICT OF NANAIMO

BYLAW NO. 500

SCHEDULE "M" SUBDIVISION DISTRICTS - MINIMUM PARCEL SIZES

The minimum size of any lot created by subdivision shall be determined by the standard of service provided and shall meet the applicable minimum parcel size set out below:

Subdivision District	Minimum Parcel Sizes			
	Community Water & Sewer Service	Community Water System - No Community Sewer	Community Water System - Sewer System - No Community Water	All Other Subdivisions
A	20,000 m ²	20,000 m ²	20,000 m ²	20,000 m ²
B	5,000 m ²	5,000 m ²	5,000 m ²	5,000 m ²
CD	5,000 m ²	5,000 m ²	5,000 m ²	5,000 m ²
CDV	5,000 m ²	5,000 m ²	5,000 m ²	5,000 m ²
E	1,000 m ²	1,000 m ²	1,000 m ²	1,000 m ²
F	1,000 m ²	1,000 m ²	1,000 m ²	1,000 m ²
G	1,000 m ²	1,000 m ²	1,000 m ²	1,000 m ²
H	1,000 m ²	1,000 m ²	1,000 m ²	1,000 m ²
I	1,000 m ²	1,000 m ²	1,000 m ²	1,000 m ²
J	1,000 m ²	1,000 m ²	1,000 m ²	1,000 m ²
K	1,000 m ²	1,000 m ²	1,000 m ²	1,000 m ²
L	1,000 m ²	1,000 m ²	1,000 m ²	1,000 m ²
M	1,000 m ²	1,000 m ²	1,000 m ²	1,000 m ²
N	1,000 m ²	1,000 m ²	1,000 m ²	1,000 m ²
O	1,000 m ²	1,000 m ²	1,000 m ²	1,000 m ²
P	1,000 m ²	1,000 m ²	1,000 m ²	1,000 m ²
Q	1,000 m ²	1,000 m ²	1,000 m ²	1,000 m ²
R	1,000 m ²	1,000 m ²	1,000 m ²	1,000 m ²
S	1,000 m ²	1,000 m ²	1,000 m ²	1,000 m ²
T	1,000 m ²	1,000 m ²	1,000 m ²	1,000 m ²
U	1,000 m ²	1,000 m ²	1,000 m ²	1,000 m ²
V	1,000 m ²	1,000 m ²	1,000 m ²	1,000 m ²
W	1,000 m ²	1,000 m ²	1,000 m ²	1,000 m ²
X	1,000 m ²	1,000 m ²	1,000 m ²	1,000 m ²
Y	1,000 m ²	1,000 m ²	1,000 m ²	1,000 m ²
Z	1,000 m ²	1,000 m ²	1,000 m ²	1,000 m ²



0 250 500 1,000 1,500 Meters

Revision Date: June 2022

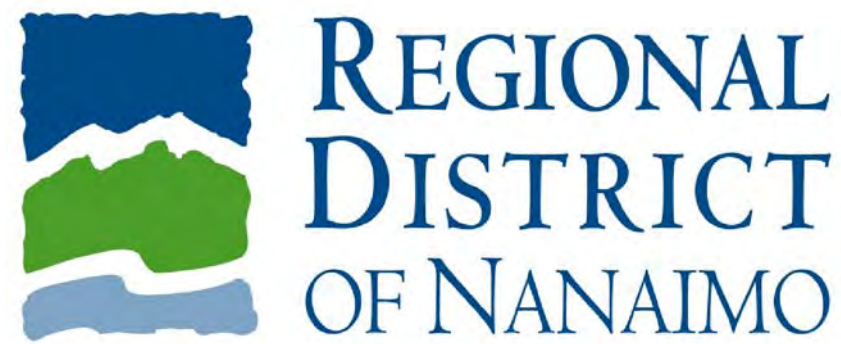
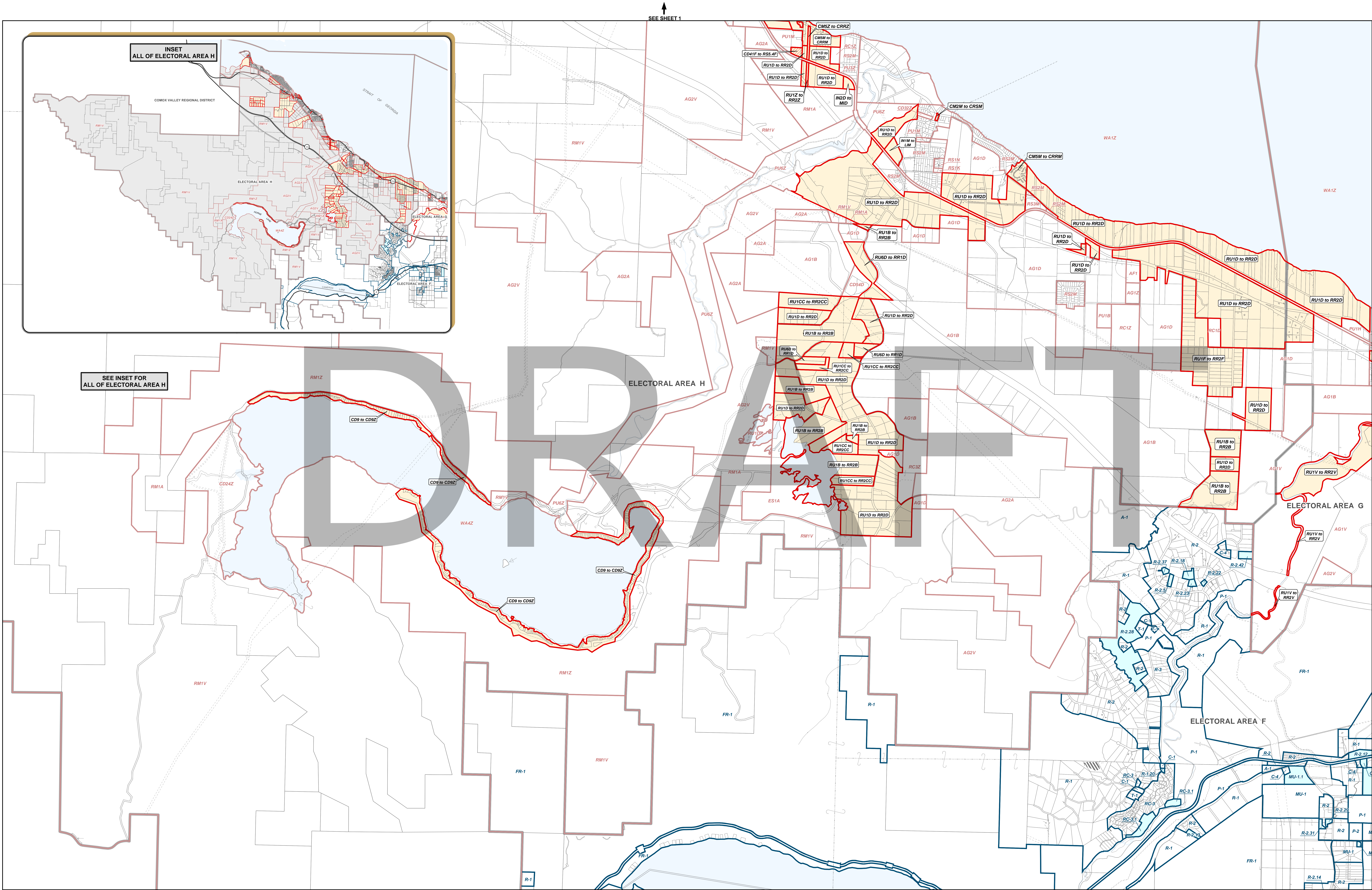
COMOX VALLEY REGIONAL DISTRICT

INSET
ALL OF ELECTORAL AREA H

SEE INSET FOR
ALL OF ELECTORAL AREA H

ELECTORAL AREA H

SEE SHEET 2



RDN ZONING BYLAW 500 REVIEW

ELECTORAL AREA H Sheet 2 of 2 Sheets

BYLAW 500

- RS1** Subdivision District
- Q** Zone Classification Short Title
- Bylaw 500 Boundary (no change)
- RU1D to RR2D** Proposed Bylaw 500 Zoning Revision
- RU1D to RR2D** Proposed Bylaw 500 Subzone

BYLAW 1285

- A-1** Zone Classification Short Title
- Bylaw 1285 Boundary
- A-1.3** Site Specific Zoning
- Land Use Contracts**
- Electorat Area Boundary**
- Municipality**

Proposed Zoning Consolidation Summary

New Zone	New Zone Name	Existing Zones
LI	Light Industrial	IN1
MI	Medium Industrial	IN2, IN3
HI	Heavy Industrial	INS
CRS	Commercial Retail & Service	CM1, CM2, CM2.1, CM3
CRR	Commercial Resort & Recreation	CM4, CM5, CM6
CDx	Idb	CMB
CDy	Idb	RCM
RR1	Rural Residential - One Dwelling	RUB
RR2	Rural Residential - Two Dwellings	RU1, RU1.1, RU2, RU3, RU4, RU5, RU7, RUB, RU9
CDz	Idb	RU10

REGIONAL DISTRICT OF NANAIMO				
BYLAW NO. 500				
SCHEDULE "W" SUBDIVISION DISTRICTS - MINIMUM PARCEL SIZES				
The minimum size of any lot created by subdivision shall be determined by the standard of service provided and shall meet the applicable minimum parcel size set out below:				
Subdivision District	Minimum Parcel Size			All Other Subdivisions
	Community Water & Sewer System	Community Water System - No Community Sewer	Community Sewer System - No Community Water	
A	20.0 ha	20.0 ha	20.0 ha	20.0 ha
B	5.0 ha	5.0 ha	5.0 ha	5.0 ha
C	5.0 ha	5.0 ha	5.0 ha	5.0 ha
CD	4.0 ha	4.0 ha	4.0 ha	4.0 ha
D	2.0 ha	2.0 ha	2.0 ha	2.0 ha
E	1.0 ha	1.0 ha	1.0 ha	1.0 ha
F	1.0 ha	1.0 ha	1.0 ha	1.0 ha
G	1.0 ha	1.0 ha	1.0 ha	1.0 ha
H	1.0 ha	1.0 ha	1.0 ha	1.0 ha
I	1.0 ha	1.0 ha	1.0 ha	1.0 ha
J	1.0 ha	1.0 ha	1.0 ha	1.0 ha
K	1.0 ha	1.0 ha	1.0 ha	1.0 ha
L	2,000 m ²	2,000 m ²	4,000 m ²	4,000 m ²
M	2,000 m ²	1,500 m ²	1,500 m ²	1,500 m ²
N	2,000 m ²	1,500 m ²	1,500 m ²	1,500 m ²
O	2,000 m ²	1,500 m ²	1,500 m ²	1,500 m ²
P	2,000 m ²	1,500 m ²	1,500 m ²	1,500 m ²
Q	2,000 m ²	1,500 m ²	1,500 m ²	1,500 m ²
R	2,000 m ²	1,500 m ²	1,500 m ²	1,500 m ²
S	2,000 m ²	1,500 m ²	1,500 m ²	1,500 m ²
T	2,000 m ²	1,500 m ²	1,500 m ²	1,500 m ²
U	2,000 m ²	1,500 m ²	1,500 m ²	1,500 m ²
V	2,000 m ²	1,500 m ²	1,500 m ²	1,500 m ²
W	2,000 m ²	1,500 m ²	1,500 m ²	1,500 m ²
X	2,000 m ²	1,500 m ²	1,500 m ²	1,500 m ²
Y	2,000 m ²	1,500 m ²	1,500 m ²	1,500 m ²
Z	2,000 m ²	1,500 m ²	1,500 m ²	1,500 m ²
AA	2,000 m ²	1,500 m ²	1,500 m ²	1,500 m ²
AB	2,000 m ²	1,500 m ²	1,500 m ²	1,500 m ²
AC	2,000 m ²	1,500 m ²	1,500 m ²	1,500 m ²
AD	2,000 m ²	1,500 m ²	1,500 m ²	1,500 m ²
AE	2,000 m ²	1,500 m ²	1,500 m ²	1,500 m ²
AF	2,000 m ²	1,500 m ²	1,500 m ²	1,500 m ²
AG	2,000 m ²	1,500 m ²	1,500 m ²	1,500 m ²
AH	2,000 m ²	1,500 m ²	1,500 m ²	1,500 m ²
AI	2,000 m ²	1,500 m ²	1,500 m ²	1,500 m ²
AJ	2,000 m ²	1,500 m ²	1,500 m ²	1,500 m ²
AK	2,000 m ²	1,500 m ²	1,500 m ²	1,500 m ²
AL	2,000 m ²	1,500 m ²	1,500 m ²	1,500 m ²
AM	2,000 m ²	1,500 m ²	1,500 m ²	1,500 m ²
AN	2,000 m ²	1,500 m ²	1,500 m ²	1,500 m ²
AO	2,000 m ²	1,500 m ²	1,500 m ²	1,500 m ²
AP	2,000 m ²	1,500 m ²	1,500 m ²	1,500 m ²
AQ	2,000 m ²	1,500 m ²	1,500 m ²	1,500 m ²
AR	2,000 m ²	1,500 m ²	1,500 m ²	1,500 m ²
AS	2,000 m ²	1,500 m ²	1,500 m ²	1,500 m ²
AT	2,000 m ²	1,500 m ²	1,500 m ²	1,500 m ²
AU	2,000 m ²	1,500 m ²	1,500 m ²	1,500 m ²
AV	2,000 m ²	1,500 m ²	1,500 m ²	1,500 m ²
AW	2,000 m ²	1,500 m ²	1,500 m ²	1,500 m ²
AX	2,000 m ²	1,500 m ²	1,500 m ²	1,500 m ²
AY	2,000 m ²	1,500 m ²	1,500 m ²	1,500 m ²
AZ	2,000 m ²	1,500 m ²	1,500 m ²	1,500 m ²
BA	2,000 m ²	1,500 m ²	1,500 m ²	1,500 m ²
BB	2,000 m ²	1,500 m ²	1,500 m ²	1,500 m ²
BC	2,000 m ²	1,500 m ²	1,500 m ²	1,500 m ²
BD	2,000 m ²	1,500 m ²	1,500 m ²	1,500 m ²
BE	2,000 m ²	1,500 m ²	1,500 m ²	1,500 m ²
BF	2,000 m ²	1,500 m ²	1,500 m ²	1,500 m ²
BG	2,000 m ²	1,500 m ²	1,500 m ²	1,500 m ²
BH	2,000 m ²	1,500 m ²	1,500 m ²	1,500 m ²
BI	2,000 m ²	1,500 m ²	1,500 m ²	1,500 m ²
BJ	2,000 m ²	1,500 m ²	1,500 m ²	1,500 m ²
BK	2,000 m ²	1,500 m ²	1,500 m ²	1,500 m ²
BL	2,000 m ²	1,500 m ²	1,500 m ²	1,500 m ²
BM	2,000 m ²	1,500 m ²	1,500 m ²	1,500 m ²
BN	2,000 m ²	1,500 m ²	1,500 m ²	1,500 m ²
BO	2,000 m ²	1,500 m ²	1,500 m ²	1,500 m ²
BP	2,000 m ²	1,500 m ²	1,500 m ²	1,500 m ²
BQ	2,000 m ²	1,500 m ²	1,500 m ²	1,500 m ²
BR	2,000 m ²	1,500 m ²	1,500 m ²	1,500 m ²
BS	2,000 m ²	1,500 m ²	1,500 m ²	1,500 m ²
BT	2,000 m ²	1,500 m ²	1,500 m ²	1,500 m ²
BU	2,000 m ²	1,500 m ²	1,500 m ²	1,500 m ²
BV	2,000 m ²	1,500 m ²	1,500 m ²	1,500 m ²
BW	2,000 m ²	1,500 m ²	1,500 m ²	1,500 m ²
BX	2,000 m ²	1,500 m ²	1,500 m ²	1,500 m ²
BY	2,000 m ²	1,500 m ²	1,500 m ²	1,500 m ²
BZ	2,000 m ²	1,500 m ²	1,500 m ²	1,500 m ²
CA	2,000 m ²	1,500 m ²	1,500 m ²	1,500 m ²
CB	2,000 m ²	1,500 m ²	1,500 m ²	1,500 m ²
CC	2,000 m ²	1,500 m ²	1,500 m ²	1,500 m ²
CD	2,000 m ²	1,500 m ²	1,500 m ²	1,500 m ²
CE	2,000 m ²	1,500 m ²	1,500 m ²	1,500 m ²
CF	2,000 m ²	1,500 m ²	1,500 m ²	1,500 m ²
CG	2,000 m ²	1,500 m ²	1,500 m ²	1,500 m ²
CH	2,000 m ²	1,500 m ²	1,500 m ²	1,500 m ²
CI	2,000 m ²	1,500 m ²	1,500 m ²	1,500 m ²
CJ	2,000 m ²	1,500 m ²	1,500 m ²	1,500 m ²
CK	2,000 m ²	1,500 m ²	1,500 m ²	1,500 m ²
CL	2,000 m ²	1,500 m ²	1,500 m ²	1,500 m ²
CM	2,000 m ²	1,500 m ²	1,500 m ²	1,500 m ²
CN	2,000 m ²	1,500 m ²	1,500 m ²	1,500 m ²
CO	2,000 m ²	1,500 m ²	1,500 m ²	1,500 m ²
CP	2,000 m ²	1,500 m ²	1,500 m ²	1,500 m ²
CQ	2,000 m ²	1,500 m ²	1,500 m ²	1,500 m ²
CR	2,000 m ²	1,500 m ²	1,500 m ²	1,500 m ²
CS	2,000 m ²	1,500 m ²	1,500 m ²	1,500 m ²
CT	2,000 m ²	1,500 m ²	1,500 m ²	1,500 m ²
CU	2,000 m ²	1,500 m ²	1,500 m ²	1,500 m ²
CV	2,000 m ²	1,500 m ²	1,500 m ²	1,500 m ²
CW	2,000 m ²	1,500 m ²	1,500 m ²	1,500 m ²
CX	2,000 m ²	1,500 m ²	1,500 m ²	1,500 m ²
CY	2,000 m ²	1,500 m ²	1,500 m ²	1,500 m ²
CZ	2,000 m ²	1,500 m ²	1,500 m ²	1,500 m ²
DA	2,000 m ²	1,500 m ²	1,500 m ²	1,500 m ²
DB	2,000 m ²	1,500 m ²	1,500 m ²	1,500 m ²
DC	2,000 m ²	1,500 m ²	1,500 m ²	1,500 m ²
DD	2,000 m ²	1,500 m ²	1,500 m ²	1,500 m ²
DE	2,000 m ²	1,500 m ²	1,500 m ²	1,500 m ²
DF	2,000 m ²	1,500 m ²	1,500 m ²	1,500 m ²
DG	2,000 m ²	1,500 m ²	1,500 m ²	1,500 m ²
DH	2,000 m ²	1,500 m ²	1,500 m ²	1,500 m ²
DI	2,000 m ²	1,500 m ²	1,500 m ²	1,500 m ²
DJ	2,000 m ²	1,500 m ²	1,500 m ²	1,500 m ²
DK	2,000 m ²	1,500 m ²	1,500 m ²	1,500 m ²
DL	2,000 m ²	1,500 m ²	1,500 m ²	1,500 m ²
DM	2,000 m ²	1,500 m ²	1,500 m ²	1,500 m ²
DN	2,000 m ²	1,500 m ²	1,500 m ²	1,500 m ²
DO	2,000 m ²	1,500 m ²	1,500 m ²	1,500 m ²
DP	2,000 m ²	1,500 m ²	1,500 m ²	1,500 m ²
DQ	2,000 m ²	1,500 m ²	1,500 m ²	1,500 m ²
DR	2,000 m ²	1,500 m ²	1,500 m ²	1,500 m ²
DS	2,000 m ²	1,500 m ²	1,500 m ²	1,500 m ²
DT	2,000 m ²	1,500 m ²	1,500 m ²	1,500 m ²
DU	2,000 m ²	1,500 m ²	1,500 m ²	1,500 m ²
DV	2,000 m ²	1,500 m ²	1,500 m ²	1,500 m ²
DW	2,000 m ²	1,500 m ²	1,500 m ²	1,500 m ²
DX	2,000 m ²	1,500 m ²	1,500 m ²	1,500 m ²
DY	2,000 m ²	1,500 m ²	1,500 m ²	1,500 m ²
DZ	2,000 m ²	1,500 m ²	1,500 m ²	1,500 m ²
EA	2,000 m ²	1,500 m ²	1,500 m ²	1,500 m ²
EB	2,000 m ²	1,500 m ²	1,500 m ²	1,500 m ²
EC	2,000 m ²	1,500 m ²	1,500 m ²	1,500 m ²
ED	2,000 m ²	1,500 m ²	1,500 m ²	1,500 m ²
EE	2,000 m ²	1,500 m ²	1,500 m ²	1,500 m ²
EF	2,000 m ²	1,500 m ²	1,500 m ²	1,500 m ²
EG	2,000 m ²	1,500 m ²	1,500 m ²	1,500 m ²
EH	2,000 m ²	1,500 m ²	1,500 m ²	1,500 m ²
EI	2,000 m ²	1,500 m ²	1,500 m ²	1,500 m ²
EJ	2,000 m ²	1,500 m ²	1,500 m ²	1,500 m ²
EK	2,000 m ²	1,500 m ²	1,500 m ²	1,500 m ²
EL	2,000 m ²	1,500 m ²	1,500 m ²	1,500 m ²
EM	2,000 m ²	1,500 m ²	1,500 m ²	1,500 m ²
EN	2,000 m ²	1,500 m ²	1,500 m ²	1,500 m ²
EO	2,000 m ²	1,500 m ²	1,500 m ²	1,500 m ²
EP	2,000 m ²	1,500 m ²	1,500 m ²	1,500 m ²
EQ	2,000 m ²	1,500 m ²	1,500 m ²	1,500 m ²
ER	2,000 m ²	1,500 m ²	1,500 m ²	1,500 m ²
ES	2,000 m ²	1,500 m ²	1,500 m ²	1,500 m ²
ET	2,000 m ²	1,500 m ²	1,500 m ²	1,500 m ²
EU	2,000 m ²	1,500 m ²	1,500 m ²	1,500 m ²
EV	2,000 m ²	1,500 m ²	1,500 m ²	1,500 m ²
EW	2,000 m ²	1,500 m ²	1,500 m ²	1,500 m ²
EX	2,000 m ²	1,500 m ²	1,500 m ²	1,500 m ²
EY	2,000 m ²	1,500 m ²	1,500 m ²	1,500 m ²
EZ	2,000 m ²	1,500 m ²	1,500 m ²	1,500 m ²
FA	2,000 m ²	1,500 m ²	1,500 m ²	1,500 m ²
FB	2,000 m ²	1,500 m ²	1,500 m ²	1,500 m ²
FC	2,000 m ²	1,500 m ²	1,500 m ²	1,500 m ²
FD	2,000 m ²	1,500 m ²	1,500 m ²	1,500 m ²
FE	2,000 m ²	1,500		