

Attachment 2 Proposed Plan of Subdivision

PRELIMINARY BARE LAND STRATA PLAN OF LOT 1, SECTION 13, RANGE 2, CEDAR DISTRICT,
PLAN 40406, EXCEPT PARTS IN PLANS VIP58338 AND VIP62139.

PLAN EPP _____

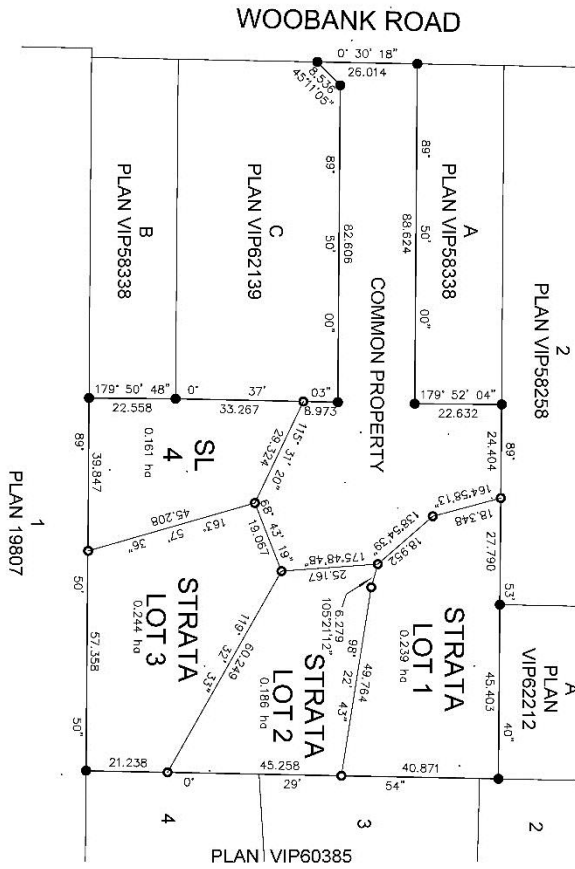
Pursuant to Section 113 of the Land Title Act.

BCGS 92G.011

The intended plot size of this plan is 432mm in width by 280mm in height, B size, when plotted at a scale of 1:1000.

LEGEND

Antennomic bearings are derived from Plan VIP62139.
● denotes Standard Iron Post found.
● denotes Standard Iron Post placed.
All distances are in metres.



J.E. ANDERSON & ASSOCIATES
B.C. Land Surveyors - Consulting Engineers
Vancouver - Nanaimo - Port Moody - B.C.
File: 96492

This plan lies within the Regional District of Nanaimo

NOVEMBER 27, 2021